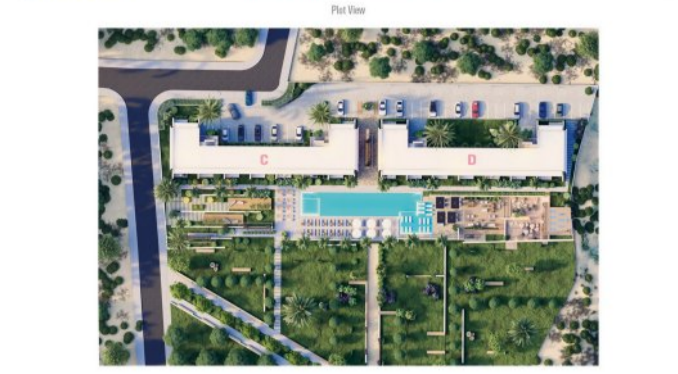


## Heaven's Hill Village II residential complex

Location **Kyrenia, Esentepe**



### About the project BAŞTAŞLAR

Developer **The Cove-Baştaşlar Construction**

Start of sale	<b>2023</b>
Key handover	<b>2027</b>
Houses/blocks	<b>2</b>
Building floor	<b>2</b> <b>2</b>
	Min Max
Units total	<b>18 - 1+1, 18 - 2+1</b>

Distance to the sea - 1100 m

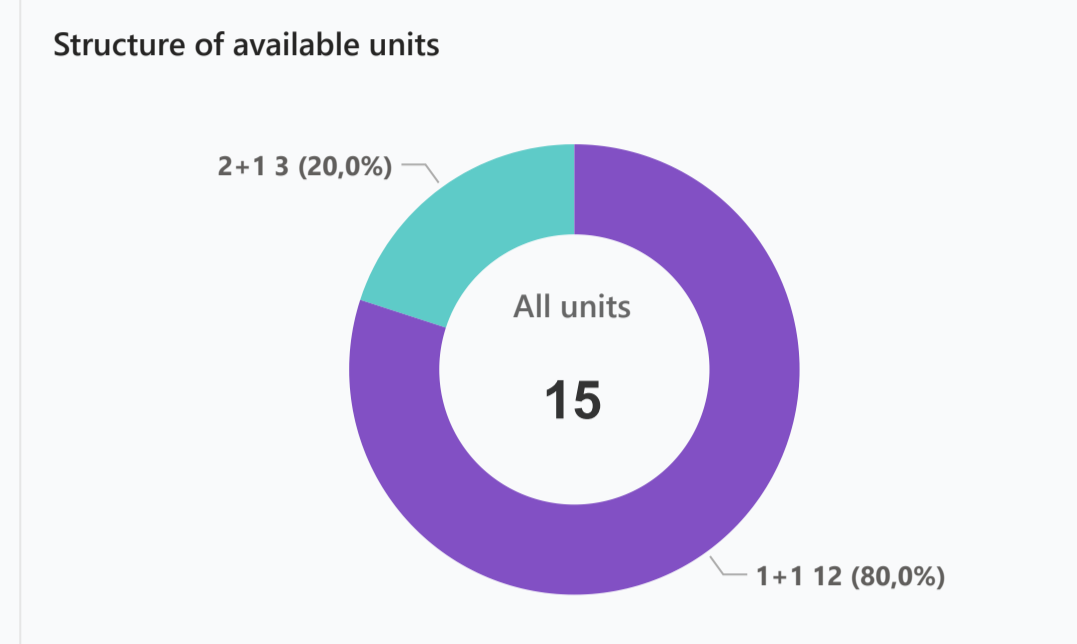
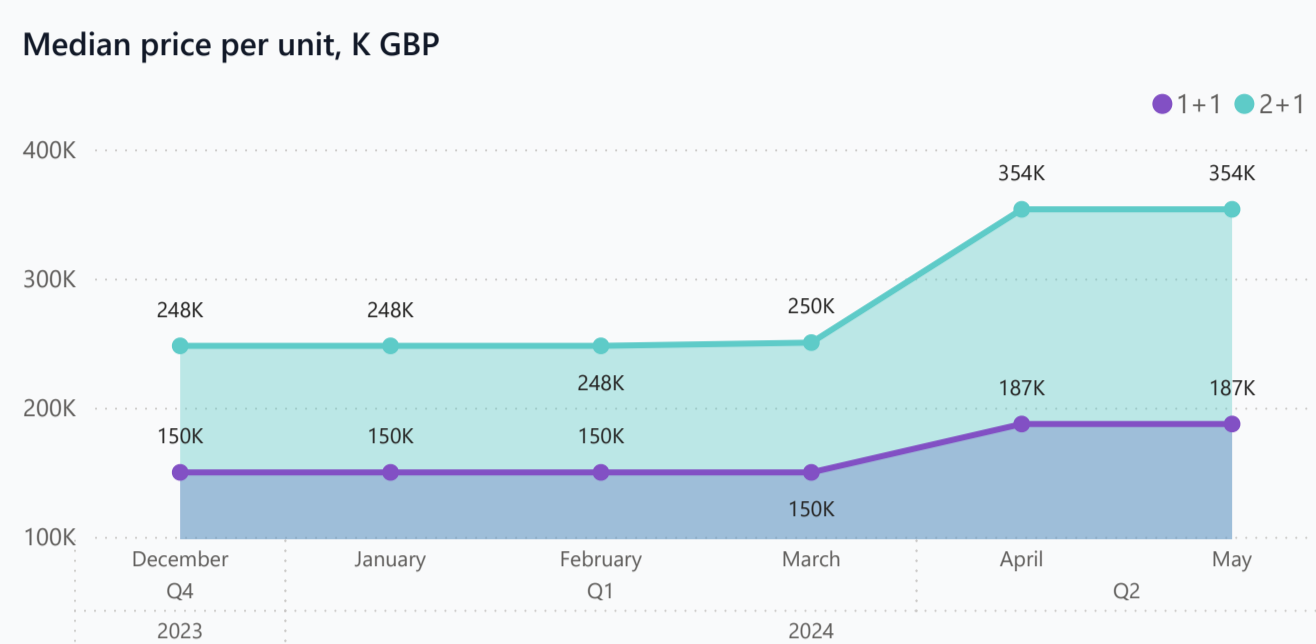
Distance to key locations:  
15 minutes drive from Kyrenia

Heaven's Hill Village, located in Sun Valley Mountainside next to Rose Village and Infinity Village, offers beautiful sea and mountain view and closeness to nature. Sun Valley is a "mini city style" community that is divided into Sun Valley Mountainside (6 completed villages), and Sun Valley Seaside (1 completed and 2 upcoming villages). It doesn't matter either you live in Seaside or in Mountainside part, you will have full access to all facilities and most of the pools in the whole community.

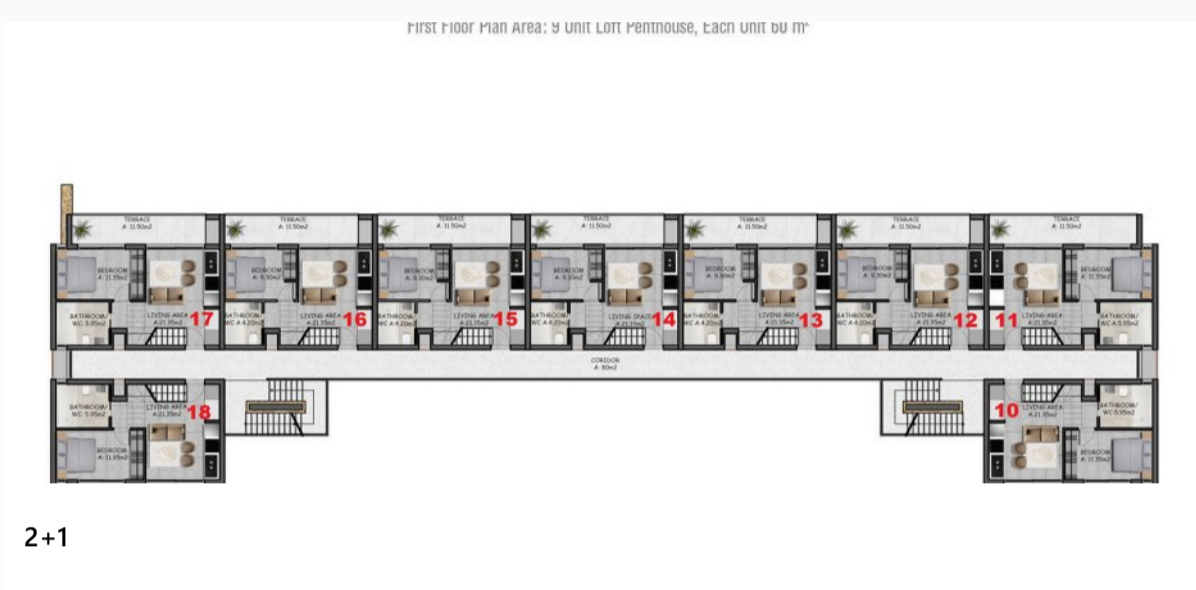
### Complex infrastructure

- Bar
- Central generator
- Closed territory
- Fitness centre
- Indoor pool
- Kid's playground
- Open pool
- Parking
- Rental office
- Restaurant
- Security Camera System

### Available units **15** / 36 total



### Plans



### Payment plans

**Deposit (non-refundable)** 2000 GBP for 2 weeks, 5000 GBP for a mon...

Option	Down payment	Installments months	Discount	Offer
Option 1	35 %	65% till key	-	-
Option 2	35 %	35% till key, 30...	-	-
Option 3	-	-	-	-
Option 4	-	-	-	-

### Special offer

Fully furnished design package

Rental guarantee

Trafo 2000 GBP Resale after 35% Maintenance fee Studio 125 GBP, 1+1 175 GBP, 2+1 and 3+1 225 GBP Rental services 40 %

### Details

Bedrooms	Subtype	Block	Unit №	Floor	View	Bathroom	Internal area, sq. m	Balcony/Terrace, sq. m	Rooftop terrace, sq. m	Garden, sq. m	Gross covered area, sq. m	Current price, GBP	Price per sqm, GBP
1+1	Flat	C	C3	0			41	15			56	187 375	3 346
1+1	Flat	C	C4	0			41	15			56	187 375	3 346
1+1	Flat	C	C5	0			41	15			56	187 375	3 346
1+1	Flat	C	C6	0			41	15			56	187 375	3 346
1+1	Flat	C	C7	0			41	15			56	187 375	3 346
1+1	Flat	C	C8	0			41	15			56	197 375	3 525
1+1	Flat	C	C9	0			41	15			56	197 375	3 525
1+1	Flat	D	D3	0			41	15			56	187 375	3 346
1+1	Flat	D	D7	0			41	15			56	187 375	3 346
1+1	Flat	D	D5	0			41	15			56	187 378	3 346
1+1	Flat	D	D1	0			41	15			56	193 625	3 458
1+1	Flat	D	D2	0			41	15			56	197 375	3 525
2+1	Loft	C	C14	01			60	23	34		117	353 625	3 022
2+1	Loft	C	C17	01			60	23	34		117	359 875	3 076
2+1	Loft	D	D14	01			60	23	34		117	353 625	3 022

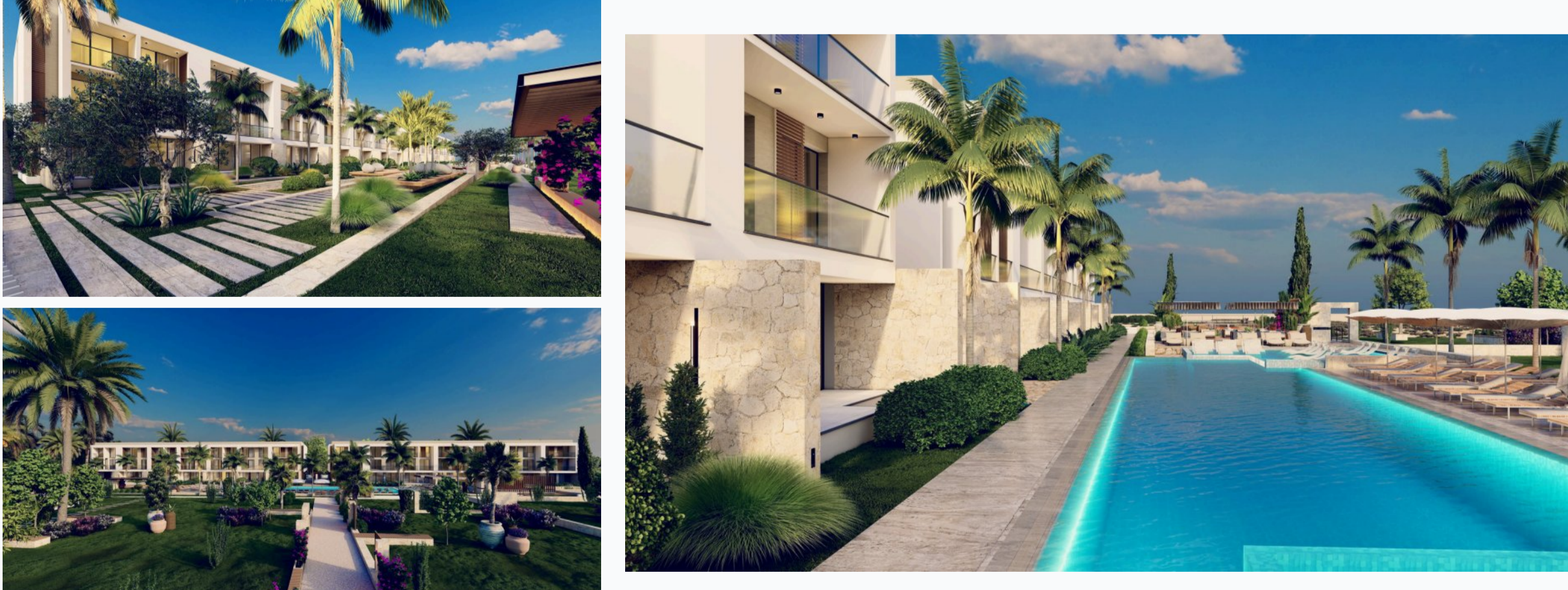
### Interior specification



### Interior specification

- Air Conditioner
- Ceramic flooring
- Double glazed windows
- Granite kitchen worktop
- Natural marble or travertine window sill
- Toilet integrated in the walls

### Exterior specification



### Exterior specification

- Private Garden
- Private pool

### Location of complex

